



Shavings

Hill Country Turners

Monthly Newsletter



Volume #20

Issue #8 Sept. 1, 2015

Next Meeting, September 10, 2015

MEETING PLACE

Hill Country Turners meet in the basement at the KACC (Kerr Arts & Cultural Center) at 228 Earl Garrett, Kerrville, Texas at 6:00 pm on the 2nd Thursday of the month. The formal meeting starts at 6:30.

August meeting: George started the meeting with more than the usual hoopla, mostly last minute appeals and plans for the SWAT meeting which looked to be a real barn-burner. Visitors were introduced and the Treasurer's report was given:

In bank at first	\$2241.02
Spent-Wood for Raffle	92.28
Received-New Members	110.00
In bank at last	\$2258.74

After that the meeting went to the dogs...well, just one dog...later..



Demo: Tom Canfield had a well prepared demo about the value (and economy) of practicing in plain pine 2x6 lumber. There are numerous good reasons to practice and visualize new bowl shapes in simple 2x6 squares. The value of really sharp and well presented tools is strongly brought out in the everlasting struggle to prevent tear-out in the softer, cross grained wood. With diligence one can even make a presentable piece out of the stuff. If not, it is quick and relatively painless way to get past some of the fears that present themselves when attacking some of the more expensive wood.



Tom asked if any of us had ever cut a piece.

The few that responded probably were referring to necessary cutting as part of a design, but Tom showed that one can get a good overall reading of his technique and ability to maintain a constant wall thickness just by cutting away sections of work he has just done. After all, the wood is cheap and relatively soft and the whole idea is to learn is it not? Take a look at some of his examples and have a little fun out there.



Thanks Tom!

Next Meeting: Next meeting is jig meeting. Everyone bring a jig that is of particular use to you in your craft.

Saturday Open House at Darrell Korman's 10:30 Saturday Sept. 12! Just a chance to see the shop and talk or do turning and maybe swap a few tools.

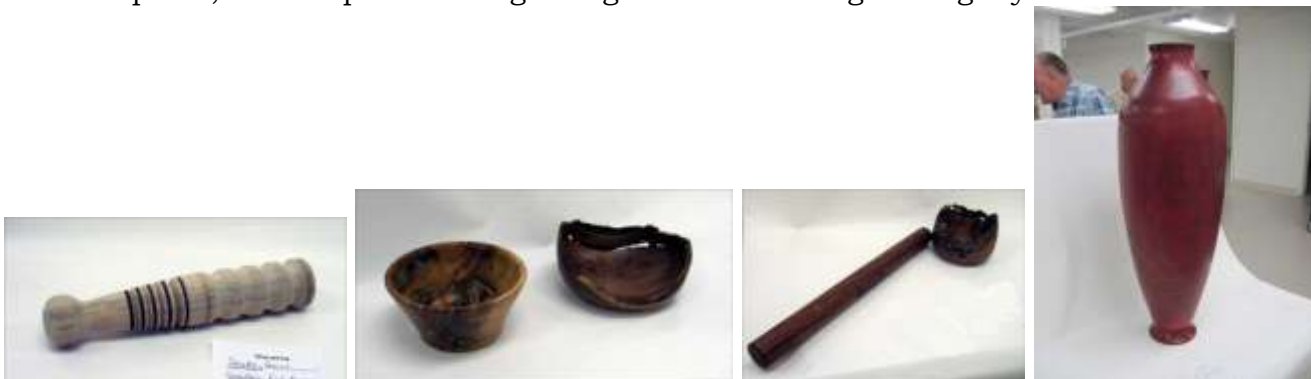
Show and Tell: OK, Emma and Harold Dykes picked up a little Chihuahua on their way to the meeting. Named Sugar? It is doing well except for spoiled. In addition to his doggie show and tell, Harold Dykes brought two beautiful segmented bowls and, in honor of James Hampton's demo last month, one of the inside-out Christmas ornaments. Joel Haby brought in a nice mesquite burl bowl with turquoise inlay.



Roger Arnold showed a salt and pepper grinder set he got out of a British publication, Woodturning magazine. There are lots of projects and the magazine is available on line. Roger also brought a very nice box of big leaf maple. Uel Clanton brought a weed pot from a fence post of aromatic cedar. It had loads of character since, in its previous life it weathered down to mostly heartwood. John Stegal brought a practice piece from a video by Frank Bowers of Atlanta's Guinnett Woodworkers Woodturners group. A three sided bowl, it started as a cube and was turned from opposite corners.



New woodturner, Trenton Green, brought his first piece, a fish knocker of basswood which was mostly a cove and bead exercise with the skew. George Taylor showed four pieces. The first picture is of a pecan and a mesquite bowl. The second is a French rolling pin of bubinga and a mesquite bowl. Our last piece is the return of an old friend, James Johnson's big and tall vase of mimosa. When we first saw it, it had a red dye base with white liming was rubbed into the surface highlighting the summer growth rings. Unfortunately, the sun got to it turning the liming wax yucky. James sanded over the surface and brought it back with a L.A. Cude finish. I didn't catch the final plans, but I hope it is being brought back to even greater glory.



Drinks/Snacks List 2015		
	Drinks	Snacks
September	Jim Whisnand	Will Aymond
October	J. Williams	Curtis Herbert
November	Kathy Hampton	Ralph Hausman
December	ANNUAL CHRISTMAS PARTY	

Set-up/Take-down List 2015

Your Name/Should be here!

September _____/_____

October. _____/_____

November. _____/_____

Set up begins ~ 5:00 p.m. The back doors will open then

HCT Mentoring Program

It has always been a practice to encourage new members to visit in the shops of other members to help them get oriented to turning. Now we are offering for new turners a special list of members eager to help along with their area of interest. Even some less-than-new members who would like to talk to someone in a special area might take advantage of the help with special interests

The following members have volunteered to serve as Club Mentors. If you have a woodturning or tool/equipment question, call one of these individuals. They would be happy to help.

Name	Phone	Specialty	Name	Phone	Specialty
Roger Arnold	830-866-3670	Shop Practices	Uel Clanton	830-896-5288	General/Spindles
L. A. Cude	901-355-7046	Lacquer Finish	James Johnson	830-895-4170	All
Joe Johnson	830-896-5924	General	John Jones	830-537-4503	General
K. Longnecker	830-257-6033	Split Turning/Pens	Ken Morton	210-833-7148	Natural Edge
Raúl Peña	830-6342545	General			

THE BIG CHIPS” of HCT 2015

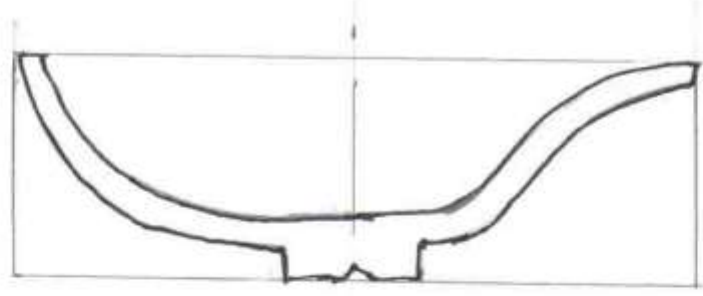
President	George Taylor	(972)824-0550	
1 st Vice President	John Stegall	(830) 928-0859	
2 nd Vice President	Kathy Roberts	(325) 247-6266	
Treasurer	Roger Arnold	(830) 866-3670	
Secretary	Joel Haby	(210) 884-6762	
Past President	Ken Morton	(210) 833-7148	
Special Events	Bill Hussey	(830) 896-8093	
Newsletter	Jerre Williams	(830) 895-3206	
KACC Liaison	Uel Clanton	(830) 896-5288	
SWAT Representative	Tom Canfield	(830) 997-6236	
Audio-Video Director	Tom Whiting	(443) 243-6933	
Webmaster	Linda Arnold	(830) 866-3670	
Website	http://www.hillcountryturners.org		

Hill country turners is a chapter of the American Association of Woodturners dedicated to providing education, information and a place to meet and discuss woodworking and woodturning.

Please note: We kept Tom’s sample shapes this month also for your post meeting consideration.

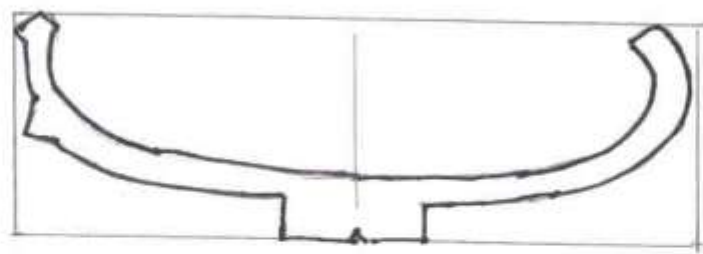
BOWL PROFILES FOR 2X6 LUMBER

①
STANDARD



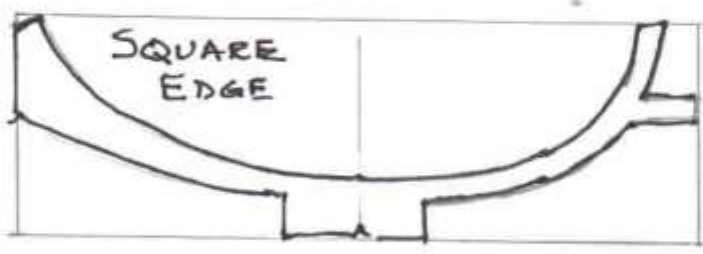
②
OGEE

③
ADD RIM
& SIDE
DETAIL



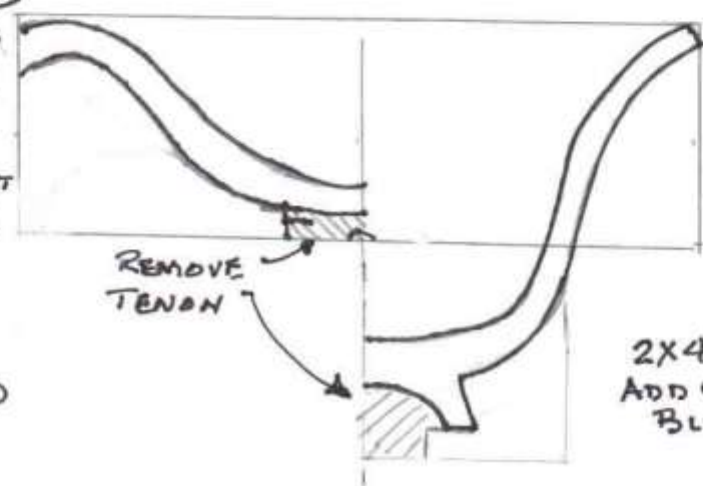
④
UNDERCUT
RIM

⑤
DIAG. CUT
SECTION



⑥
DIAG. CUT
SECTION

⑦
DIAG. CUT
SECTION



⑧
GLUE FOR
ADD HEIGHT,
BASE, ETC.

HEANFIELD
2-19-15

2X4
ADD GLUE
BLOCK